

ARIZONA
FLORIDA
WORLDWIDE

EMBRY-RIDDLE

Aeronautical University

Real education. Above all.
embryriddle.edu

Florida Campus

Arizona Campus

Worldwide Campus



Look. Up.

Smart. Bright. Determined. This story is about you. Now is the time to realize your full potential and become what you were made for. At Embry-Riddle we know where you want to go and how to get you there. Find programs to help you reach a destiny greater than expected and with a salary to match. Today is the day to learn all you can about a university that is focused entirely on you. Today is the first day of your future in the industry you love. Realize that today your dreams are about to become reality.

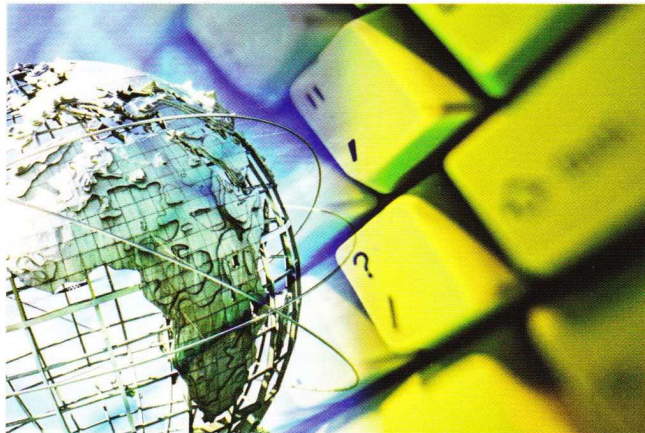


Making. History.

Embry-Riddle is the world's oldest, largest, and most prestigious university specializing in aviation and aerospace. Course studies include the operation, engineering, research, manufacturing, marketing, and management of modern aircraft and the systems that support them. Embry-Riddle is world-renowned for its research and consulting for aviation, aerospace, and related industries. Residential campuses are located in Daytona Beach, Florida, and Prescott, Arizona, while the Worldwide Campus provides instruction through more than 170 centers in the United States, Europe, Asia, Canada, and the Middle East and through online learning.



There's so much history and pride here, more than you ever imagined. Explore our world by visiting embryriddle.edu today.



Air. Born.

You're part of a new generation. A new league of possibility thinkers who ask the question "why not?" We're Embry-Riddle Aeronautical University and we want achievers just like you. With our knowledge, experience, technology, and high standards in education, we'll help you rise above the ordinary.

As the preeminent university in aerospace, aviation, transportation, and homeland security, Embry-Riddle produces leaders – people who are talented, ambitious, and focused on success. We are steeped in history and the glory of flight. Since 1925, Embry-Riddle has produced more astronauts, scientists, pilots, and engineers focused on the aeronautical industry than any other university.



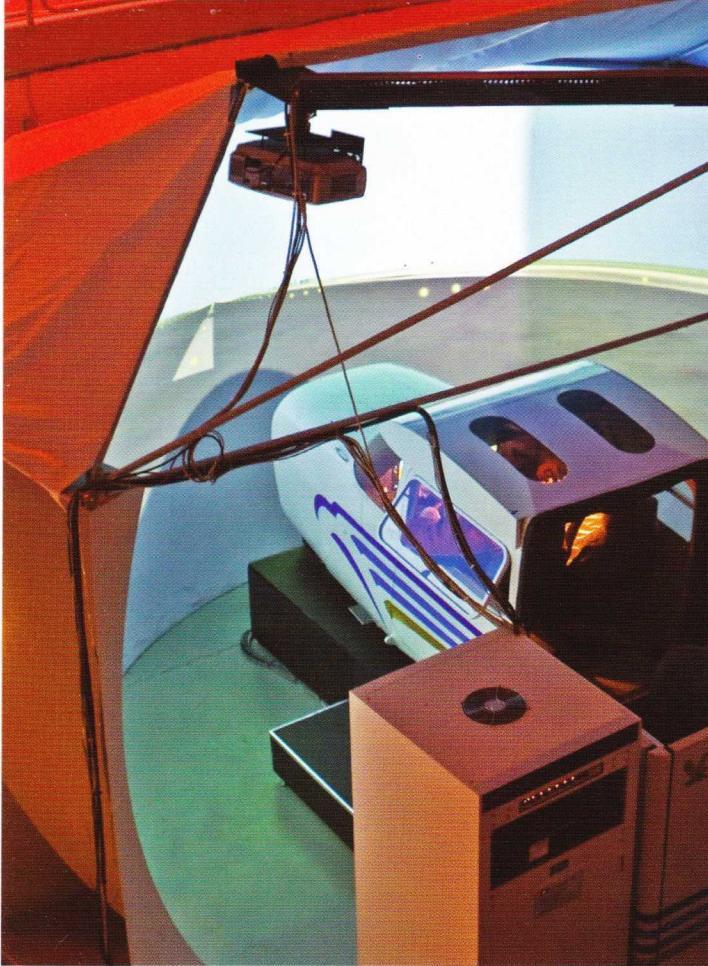
Fast. Facts.

- Embry-Riddle Aeronautical University is the world's oldest, largest, and most prestigious university specializing in aviation and aerospace. It is the only fully accredited, aviation-oriented university in the world.
- Embry-Riddle has residential campuses in Daytona Beach, Florida, and Prescott, Arizona, as well as a Worldwide Campus dedicated to providing educational opportunities to working adults throughout the United States, Europe, Asia, Canada, and the Middle East.
- Embry-Riddle is the sole provider of aviation-related degree programs to the U.S. military in Europe under a \$30 million contract with the U.S. Department of Defense.
- *U.S. News & World Report* ranks Embry-Riddle's aerospace engineering program #1 in the nation among schools without doctoral programs. Embry-Riddle's aerospace engineering program is the largest in the nation.
- The world's major airlines hire more graduates from Embry-Riddle than any other university.
- Six Embry-Riddle alumni are current or former astronauts.
- The University maintains a fleet of 93 instructional aircraft as well as 27 state-of-the-art simulators.
- Embry-Riddle is the nation's largest supplier of air traffic controllers with bachelor degrees to the FAA.
- Combined annual enrollment for all campuses has recently surpassed 34,000.

Florida Campus

Arizona Campus

Worldwide Campus



Star. Power.

Research is an important part of any university's commitment to quality and Embry-Riddle is no different. In fiscal year 2009, some 155 faculty members were involved in research and other activities with 186 sponsored projects. The total value of all active awards was more than \$10 million. The University is also a major consultant in aviation, aerospace, and related fields. Under a current FAA-funded research agreement, Embry-Riddle's Next Generation Advanced Research Lab is developing a virtual-reality air traffic system that will allow students to fly unmanned aircraft in a simulated environment.

As aviation and aerospace constantly evolve, so does Embry-Riddle. The University is committed to seeking opportunities for students to work more closely with the aviation industry worldwide. The passion and pride hold true. The evolution continues.

Big. Dreams.

It all started with imagination and commitment. This is the legacy of Embry-Riddle's Daytona Beach, Florida, campus. Founded just 22 years after the Wright brothers' historic flight at Kitty Hawk, Embry-Riddle has made its mark on the world of aviation, space, and beyond. Here is a place where astronauts walked, where Mother Nature still rules, and "nanos" are common conversation. Welcome to a university that speaks the global language of "imagine."

Embry-Riddle is located next to Daytona Beach International Airport and the world-famous Daytona International Speedway, just a few miles from the Atlantic Ocean. Students at Embry-Riddle have the best of all worlds with thousands of things to do and the perfect weather to do them in. This 185-acre campus serves nearly 5,000 undergraduate and graduate students with outstanding facilities and technology unmatched by other universities.

Close to Kennedy Space Center and high-tech centers along the Space Coast and in Orlando, Embry-Riddle is truly the center of attention. With its ultra-modern campus, Embry-Riddle is home to the Lehman Engineering and Technology Center, the Advanced Flight

Simulation Center, a fleet of 60-plus Cessna, Piper, and Diamond aircraft, and the state-of-the-art College of Aviation and College of Business academic buildings. That's just for starters. With possibly the most advanced facilities and the most experienced real-world instructors in the nation, Embry-Riddle is achieving new levels of excellence in aeronautical education.

While pursuing your education at Embry-Riddle, you'll gain valuable experience through participation in cooperative education and internship opportunities. Embry-Riddle has internship agreements and cooperative programs with most major airlines. But it doesn't stop there. Imagine an internship at a major industry-related company such as B/E Aerospace, Boeing, Gulfstream Aerospace, Lockheed Martin, Pratt & Whitney, and Rockwell Collins. Government agencies are looking for our best and brightest too. The FAA, NASA, the National Oceanic Atmospheric Administration, the National Transportation Safety Board, and Naval Air Systems Command all regularly offer Embry-Riddle's students tremendous opportunities with their organizations and many times these opportunities result in permanent positions upon graduation. Feeling worldly? Take advantage of study-abroad opportunities in several countries each summer as well as year-long exchange programs.

Daytona Beach Degree Programs

Undergraduate Degrees

Aeronautical Science
Aeronautics
Aerospace Electronics
Aerospace Engineering
Air Traffic Management
Applied Meteorology
Aviation Maintenance Science, AS or BS
Business Administration
Civil Engineering
Communication
Computational Mathematics
Computer Engineering
Computer Science
Electrical Engineering
Engineering Physics
Homeland Security
Human Factors Psychology
Mechanical Engineering
Safety Science
Software Engineering
Space Physics

Graduate Degrees

Aeronautics
Aerospace Engineering
Business Administration
Engineering Physics
Human Factors and Systems
Mechanical Engineering
Software Engineering



Business. Class.

Embry-Riddle's business graduates hold top positions with airlines, airports, manufacturers, suppliers, and regulatory groups. That's not breaking news. It's what you'd expect from the world's premier aviation/aerospace university. Students in the College of Business choose to major in Management or Air Transportation and learn the latest business practices from experts in the field. Graduates gain specialized knowledge of aviation as well as the solid foundation of business skills valuable to employers in any industry. Internships and research projects provide students with priceless, real-world experience. Study with professors who wrote the book on aviation business. Study at Embry-Riddle.

Florida Campus

Arizona Campus

Worldwide Campus

Higher. Vision.

Success is measured by more than just the salary you earn. To be truly successful, your life's work should focus on your passion. You're lucky if you know what your passion is. To go for it, to make a career out of it, this is when the magic begins. If you're inspired to see an airplane take off or a space shuttle launch, Embry-Riddle offers more than 30 degree programs that can turn your passion into an exciting, lucrative career. Exploring your passion? Join the growing, dynamic industry of aviation and aerospace. As an Embry-Riddle graduate, doors open for you.



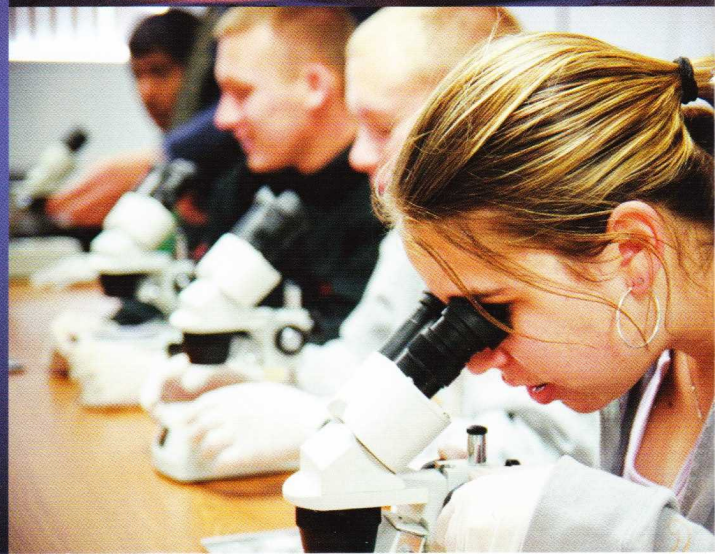
Prescott Degree Programs

Undergraduate Degrees

- Aeronautical Science
- Aeronautics
- Aerospace Engineering
- Air Traffic Management
- Applied Meteorology
- Aviation Business Administration
- Aviation Environmental Science
- Computer Engineering
- Electrical Engineering
- Global Security and Intelligence Studies
- Interdisciplinary Studies
- Mechanical Engineering
- Space Physics

Graduate Degree

- Safety Science





Miles. Above.

As a student at Embry-Riddle's Prescott, Arizona, campus, the world is wide open and the future is stretched out in front of you. You may dream of designing or flying an aircraft or even a spacecraft. Perhaps you envision yourself developing a planetary rover, acting as an environmental consultant for an airport, or forecasting the weather and its impact on people and places around the world. With state-of-the-art laboratories, an exceptional fleet of modern aircraft, and a rigorous academic experience, Embry-Riddle Prescott will help you go above and beyond your expectations.

Located in the high desert of Arizona, Embry-Riddle is just two hours from Phoenix and the Grand Canyon. Chosen specifically for its clear, dry weather, Prescott is ideally located for flying. The campus has nearly 1,700 students with an average student/instructor ratio of 14:1. This special location offers incredible recreational opportunities, including white-water river rafting, hiking, mountain climbing, sailing, canoeing, and camping.

Embry-Riddle Prescott's Air Force and Army ROTC programs, envied by many other schools, offer attractive scholarships to qualified students. Air Force Detachment 028, consistently named "Best in the West," is the third largest detachment in the nation.

Since 1978, Embry-Riddle's Prescott campus has put the "universe" in university. Our campus courses include humanities, communication, physical and life sciences, mathematics, economics, business, security and intelligence studies, and military science. With our low student-to-faculty ratio, you'll get the personal attention and education only Embry-Riddle can provide.

Designed. Different.

At Embry-Riddle, we look at education differently. A real-world perspective keeps our students on the cutting edge of learning and helps them acquire the kind of knowledge only a hands-on course of study can provide. With 13 majors, special minors, and concentrations to match your passion, Embry-Riddle surpasses most other universities with ease. Not only will you get unparalleled education in your chosen field, you'll receive guidance and counseling from highly regarded industry leaders and our distinguished alumni. These prestigious individuals assist our students in their pursuit of careers as well as unique career opportunities.

With a degree from Embry-Riddle, you'll be noted by such employers as Lockheed Martin, JetBlue, Raytheon, Southwest Airlines, Accenture, the Federal Bureau of Investigation, the Central Intelligence Agency, the National Transportation Safety Board, and other national and multinational corporations. Companies and organizations consistently seek out Embry-Riddle graduates for lucrative positions.

High. Tech.

At Embry-Riddle, you see and feel your future career take flight. Imagine designing and building an autonomous vehicle or mastering a skilled maneuver in a flight simulator. Here is a place where your imagination can run free and where we encourage the "what if?"

It's a wildly diverse future we can offer you.



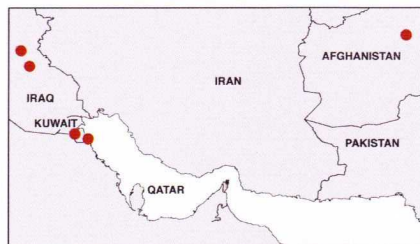
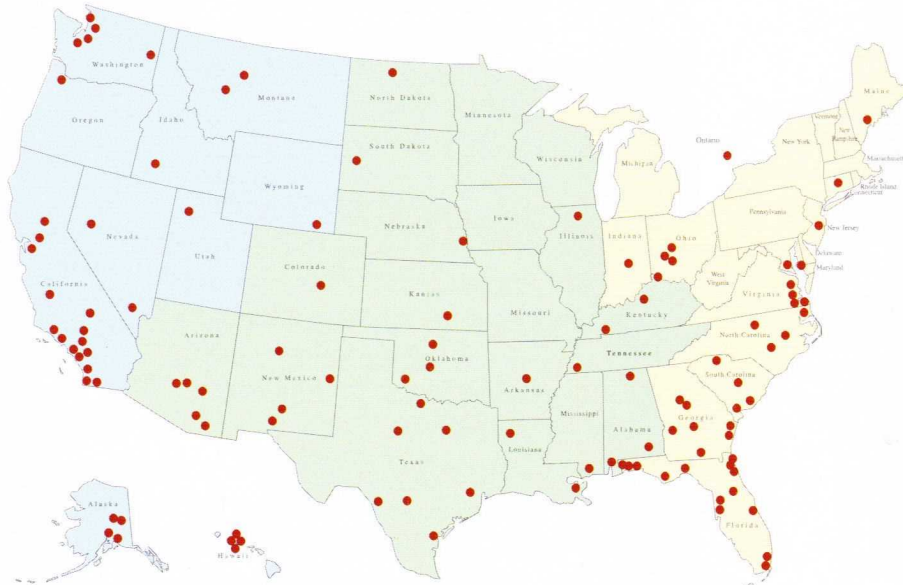
Education. Everywhere.

Interested in an undergraduate, graduate, or certificate program but time and distance keep you from a residential campus setting? Embry-Riddle's Worldwide Campus offers more than 170 teaching locations—worldwide—plus extensive online programs. Whether you're on active duty or a busy professional, Worldwide can bring the classroom to you. Gain convenience and flexibility as you earn your degree—on your time—without sacrificing the quality of your education. But just because it's convenient doesn't mean it's easy. Our online students study the same intense curriculum and truly earn the same degrees as their residential student counterparts.

Technology. Focused.

Embry-Riddle's Worldwide Campus has been honored with many awards for its outstanding commitment to using innovative technology in course delivery. EagleVision is our web video conferencing platform, providing a live virtual classroom environment using voice, video, application sharing, whiteboard, and other collaboration tools. It allows geographically distributed classrooms and individuals to connect in real time. It provides the opportunity to interact with faculty, ask questions, complete assignments, and study and communicate with other students just like the students at a residential campus. Worldwide makes being a student easier than you ever imagined.

Convenient. Locations.



Five Ways. To Learn.

At Embry-Riddle Aeronautical University – Worldwide, our goal is to give you exactly the education you need, exactly the way you need it. That's why, in addition to offering the industry's most sought after degrees and programs, we offer you more ways to take courses and complete those programs. Each of our learning modalities, while distinct in its delivery and operation, provides the same high-quality information, instruction, and opportunities for interaction with faculty and fellow students. Simply pick the one that fits your learning and lifestyle best, and embark on the road to educational success. Education has never been this easy!

- Classroom Learning
- EagleVision Classroom
- EagleVision Home
- Online Learning
- Blended Program

Worldwide Degree Programs

With a vast array of degrees and programs available through Embry-Riddle Worldwide you can advance your future without upsetting the balance of your life. Explore a new direction in career advancement.

Undergraduate Degrees

Aviation Business Administration
 Aviation Maintenance
 Professional Aeronautics
 Technical Management
 Technical Management—Engineering Sciences Specialty
 Technical Management—Logistics Specialty
 Technical Management—Management of Information Systems
 Technical Management—Occupational Safety & Health Specialty
 Transportation

Undergraduate Nondegree/ Certificates of Completion

Airport Management
 Aviation Maintenance Technology (Part 65)
 Aviation Safety
 Helicopter Operations and Safety
 Logistics
 Management
 Occupational Safety & Health
 Pre-Engineering Studies
 Security & Intelligence
 Space Studies
 Supply Chain Management

Graduate Degrees

Aeronautical Science
 Business Administration in Aviation
 Logistics and Supply Chain Management
 Management
 Project Management
 Space Education
 Technical Management

Graduate Nondegree/Certificates of Completion

Air Transportation Management
 Airport Planning, Design, and Development
 Aviation/Aerospace Industrial Management
 Aviation/Aerospace Safety
 Aviation Enterprises in the Global Environment
 Instructional System Design
 Integrated Logistics Management
 Project Management

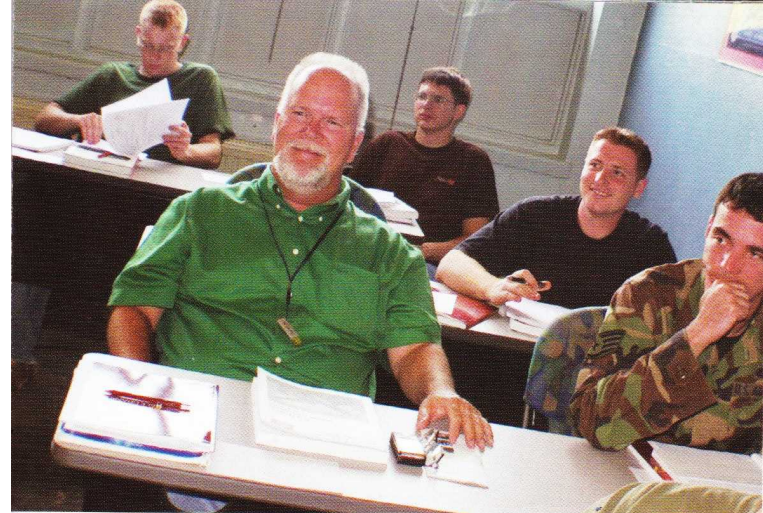
Military. Education.

Advancing your education while on active duty or transitioning to a civilian career can be an overwhelming challenge. Worldwide enables you to meet this challenge by offering campuses on more than 90 military installations around the globe. The Servicemembers Opportunity Colleges (SOC) offers programs that qualify you for academic credit, including: GoArmyEd, Air Force/AU-ABC Program, and Navy College Program Distance Learning Partnership (NCPDLP). Ask us about tuition rates for military students and veterans.

Real. World.

There is still more to Worldwide's mission. Stay focused in your career and get the edge you need to succeed in today's workplace with a continuing education with Worldwide. The Office of Professional Education offers several professional education programs in highly specialized fields so working adults can maintain a competitive advantage and advance their careers. Embry-Riddle's Worldwide Campus continues to support everyone's desire to reach for their dreams.

Let us offer you the flexibility and convenience you need for the education you deserve.



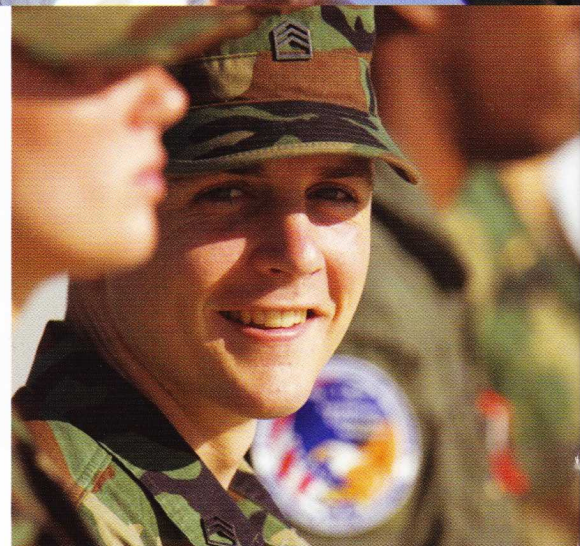


Military. Leaders.

Today, as in the past, many bright, young, ambitious students desire to be leaders. Are you one of them?

Reserve Officer Training Corps (ROTC) is a four-year college elective program that trains students to become Air Force, Army, Navy, or Marine Corps officers. Air Force, Army, and Naval ROTC programs offer you a chance to develop the skills for success needed in both the military and civilian worlds, such as confidence to lead, motivation, strategic planning, and the ability to make decisions.

Many of our students enroll with ROTC Scholarships, which may cover all or part of tuition, fees, and books – along with a monthly allowance. Some ROTC Scholarships are awarded to students after completion of their first year.



Job. Hunt.

Embry-Riddle is not only a great place to start your future, it's a great place to help you find your perfect employer match in today's highly competitive job market. Through its dedicated Career Services Office, Embry-Riddle provides quality comprehensive career-related services and resources that empower you to succeed. The Career Services Office will help you make connections with employers offering full-time employment in the aviation and aerospace industry.

Our students are highly sought-after for their expertise in all areas of aeronautics and aviation. Our annual Industry/Career Expo attracts more than 100 companies seeking skilled professionals at Embry-Riddle. Every year the University participates in major industry-related expositions and trade events such as Asian Aerospace, NBAA, Oshkosh, the Paris Air Show, and the U.S. Air and Trade Show.

Good. Sport.

Student life at Embry-Riddle includes something for everyone. Our clubs and organizations run the gamut, from aerospace to sororities and fraternities, and from honor societies to sports clubs. You'll also find great recreational activities in addition to our fantastic residential campus locations. Fitness centers, basketball courts, Olympic-sized pools, racquetball facilities, soccer fields, tennis courts, and basketball and volleyball courts help you stay fit and focused.

Bright. Future.

When you make a gift to The Fund for Embry-Riddle, you have a direct and immediate impact on students. With your support, The Fund provides scholarships and fellowships that allow deserving students to complete their studies. It also allows new opportunities for students to participate in research and meet real-world challenges in the classroom. Give to The Fund and your donation buys new equipment while keeping students on the cutting edge of technology.



Summer. Fun.

Great adventures begin here. Summer is the perfect time to explore the world of aerospace and aviation. Try us on for size.

Visit embryriddle.edu to learn more.



Real education. Above all.
embryriddle.edu

Arizona Residential Campus

3700 Willow Creek Road
Prescott, AZ 86301-3720
800-888-3728

Florida Residential Campus

600 S. Clyde Morris Blvd.
Daytona Beach, FL 32114-3900
800-862-2416

Worldwide

600 S. Clyde Morris Blvd.
Daytona Beach, FL 32114-3900
800-522-6787



Mixed Sources

Product group from well-managed
forests and other controlled sources
www.fsc.org Cert no. SCS-COC-001522
© 1996 Forest Stewardship Council